

WESTERLY[®] CENTAUR

Produced by Westerly Marine — *Designed by Laurent Giles*



CHOICE OF CABIN LAYOUTS . . .



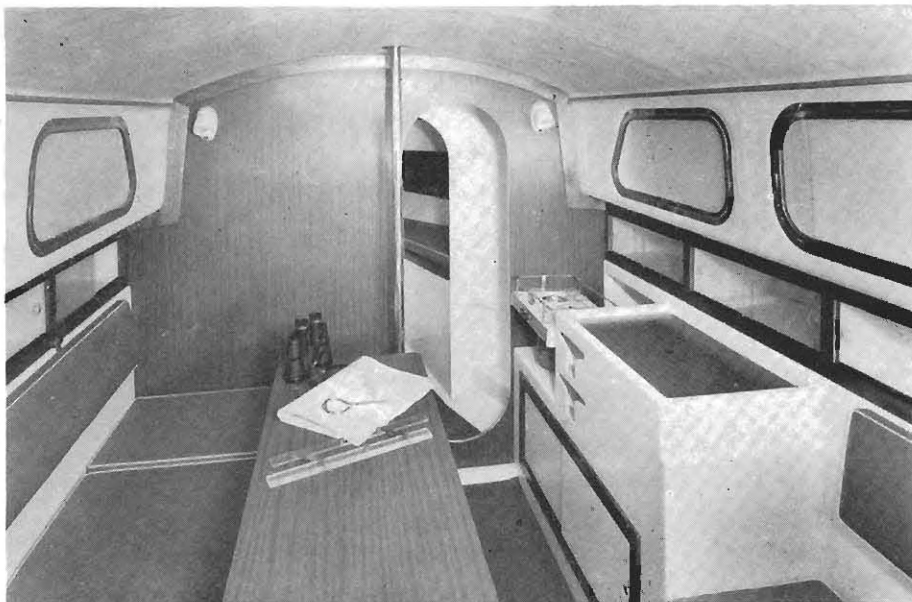
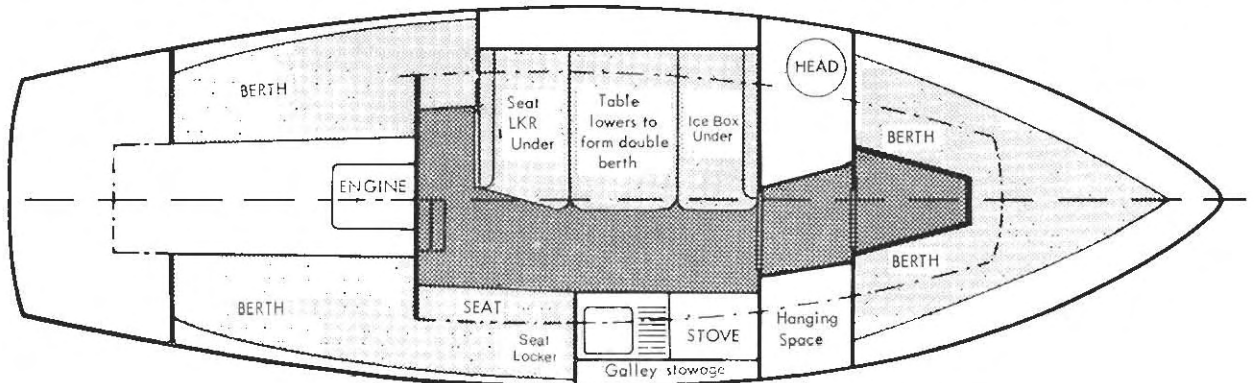
BELOW-DECK ACCOMMODATION

The saloon is bright and airy – lined with foam-backed vinyl, to minimise condensation. Standard equipment includes bunk cushions, marine W.C., cooker, ice-box, sink and piped water supply and there are numerous lockers and sliding-front cupboards. Even right forward there is 6 feet of headroom.

CHOICE OF THREE INTERIOR LAYOUTS

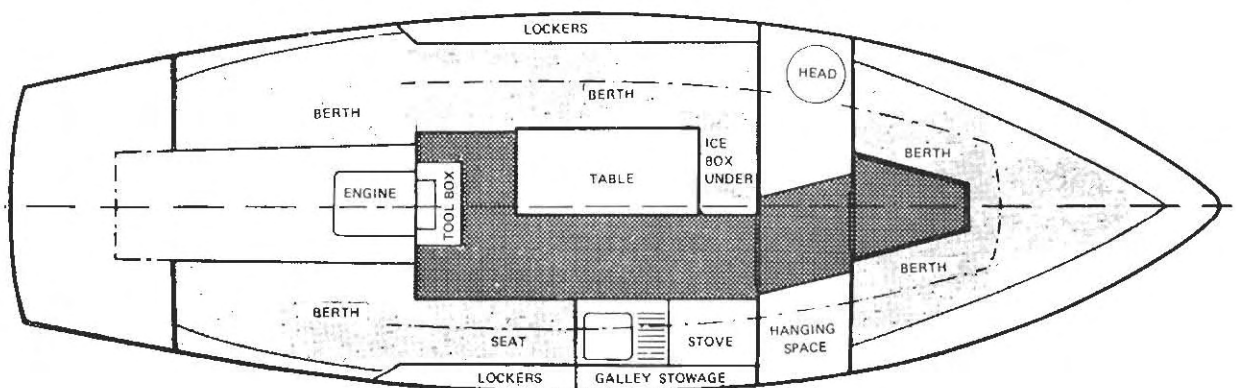
Layout A – six berths. The saloon has a dinette with athwartship seats and the table lowers to make a double berth.

Layout A



Layout B – five berths. The saloon has an L-shaped dinette with the option of a double bunk conversion at a small extra charge.

Layout B

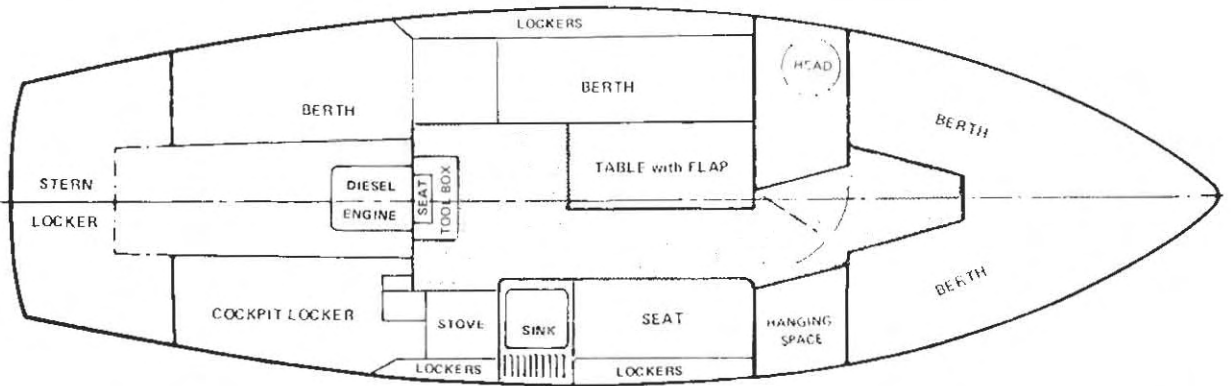




All three layouts have two full length berths in a separate forecabin, an enclosed head to port and hanging space opposite. Layouts A and B have two large quarter berths. In layout C there is a quarter berth to port and a large locker under the starboard cockpit seat.

Layout C – four berths. The saloon has a settee berth to port and an aft galley to starboard.

Layout C



WESTERLY[®] CENTAUR

As a boat specifically planned for dry, comfortable family cruising Centaur has proved to be very successful and exceptionally easy to handle. She is fast, responsive to the tiller and goes well to windward. She can be supplied with either a sloop or a ketch rig. Altogether Centaur represents good value, safety and reliability.

THE DESIGN

Laurent Giles set out to design Centaur as a good, fast cruising boat. The shape and position of her twin keels were established by tank testing and these allow her to dry out with the tide and sail safely in shallow waters. Her flared knuckle bow and deep cockpit are an advantage in all weathers, but particularly when there's a special need to keep dry. The overall impression is one of clean, pleasant lines. Space is used to the best advantage both above and below deck. Down below there is full standing head room and all deck fittings are well placed and uncluttered. This combination of sailing qualities and spacious accommodation has made Centaur a firm favourite with owners.

DECK AND COCKPIT

The big self-draining cockpit is an important feature of the Centaur. It is 7' 6" long and provides maximum comfort and protection. There is ample room for the whole crew and a good view forward. Width of the side decks allows ease of movement and clear access to the foredeck. The coachroof has four teak grab rails and all working surfaces are treated with an effective non-slip paint. Large stowage space for warps, cans and fenders is provided aft of the lifting tiller.

SAILS AND RIGGING

For strength and extra reliability standing rigging is stainless steel throughout. All sails and running rigging are made of Terylene* and the mast and spars are gold-anodised alloy. The standard sail inventory includes mainsail and No. 1 Jib.

CONSTRUCTION

Centaur is constructed in glass fibre reinforced plastics with a minimum of 10 ozs. per square foot glass mat (all hand laid) on the topsides and up to 22 ozs. of mat and rovings over the keel stubs. All deck fittings are through-bolted to backing plates and woven rovings provide extra strength at key stress points – for example, where shroud plates are fitted. The foredeck is of balsa sandwich construction to give added stiffness. All materials used – paint and resins, oiled teak, stainless steel and marine alloys – are of high quality. The boat is subject to constant checks at every stage of construction, including moulding, and each boat carries a Lloyd's certificate.

ENGINE

We recommend the Volvo Penta MD2B 25 h.p. twin cylinder diesel inboard – a smooth-running, economical and well-proven unit. This engine will drive a boat of this weight and size at speeds of up to 6½ knots and give an economical cruising range of about 250 miles on the standard 10 (Imperial) gallon tank. Suitable alternative diesels are the single cylinder 10 h.p. Volvo Penta and the 25 h.p. 4 cylinder Watermota.

MAINTENANCE

Modern, low-maintenance materials used in Centaur make her easy to look after – both in and out of the sailing season. You can count on spending a minimum of time and expense on this boat, but in case of repair a comprehensive handbook is provided with her. If any doubt should arise, or any specialized advice is needed, Westerly representatives are now available at four key points in Britain – Hampshire, Devon, Essex and Scotland – and are only too willing to help.

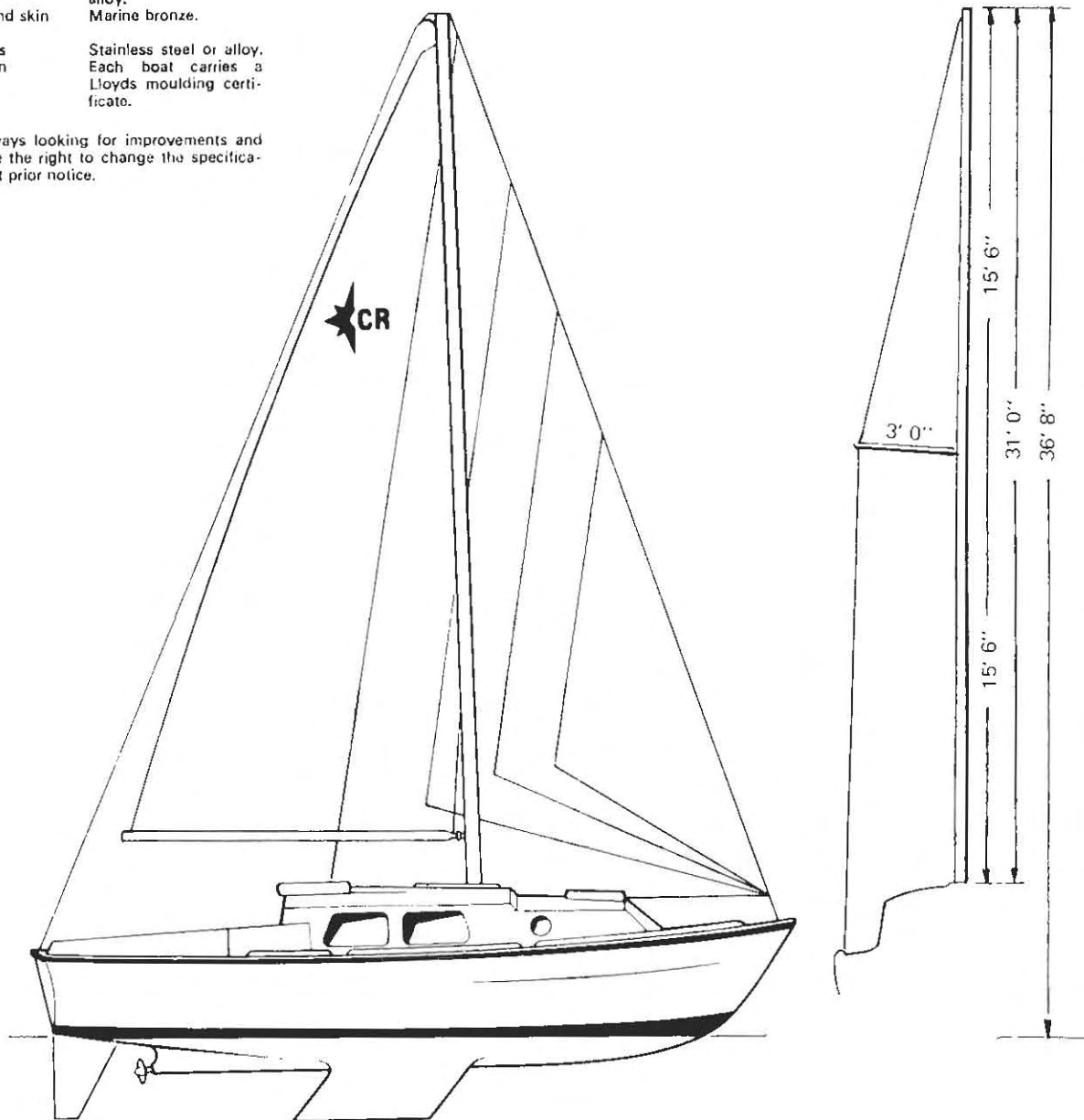
**Terylene is a polyester fibre, similar to the American Dacron.*



SPECIFICATION

Length overall	26'	7.9m
Length waterline	21' 4"	6.5m
Beam	8' 5"	2.6m
Draft	3'	0.9m
Displacement	6700 lbs	3039 kg
Ballast weight	2800 lbs	1270 kg
Thames Measurement	6.65 tons	
Mainsail	161 sq. ft.	15.0 sq. m.
No. 1 Genoa	223 sq. ft.	20.8 sq. m.
No. 2 Genoa	182 sq. ft.	16.9 sq. m.
No. 1 jib	133 sq. ft.	12.4 sq. m.
No. 2 jib	80 sq. ft.	7.5 sq. m.
No. 3 jib	45 sq. ft.	4.2 sq. m.
Standing rigging	$\frac{3}{4}$ " (5mm) diameter stainless steel 1 x 19, swaged ends.	
Running rigging	Halyards pre-stretched Terylene, sheets and lifts Terylene.	
Masts and spars	Anodised aluminium alloy.	
Seacocks and skin fittings	Marine bronze.	
Deck fittings	Stainless steel or alloy.	
Construction	Each boat carries a Lloyds moulding certificate.	

We are always looking for improvements and thus reserve the right to change the specification without prior notice.



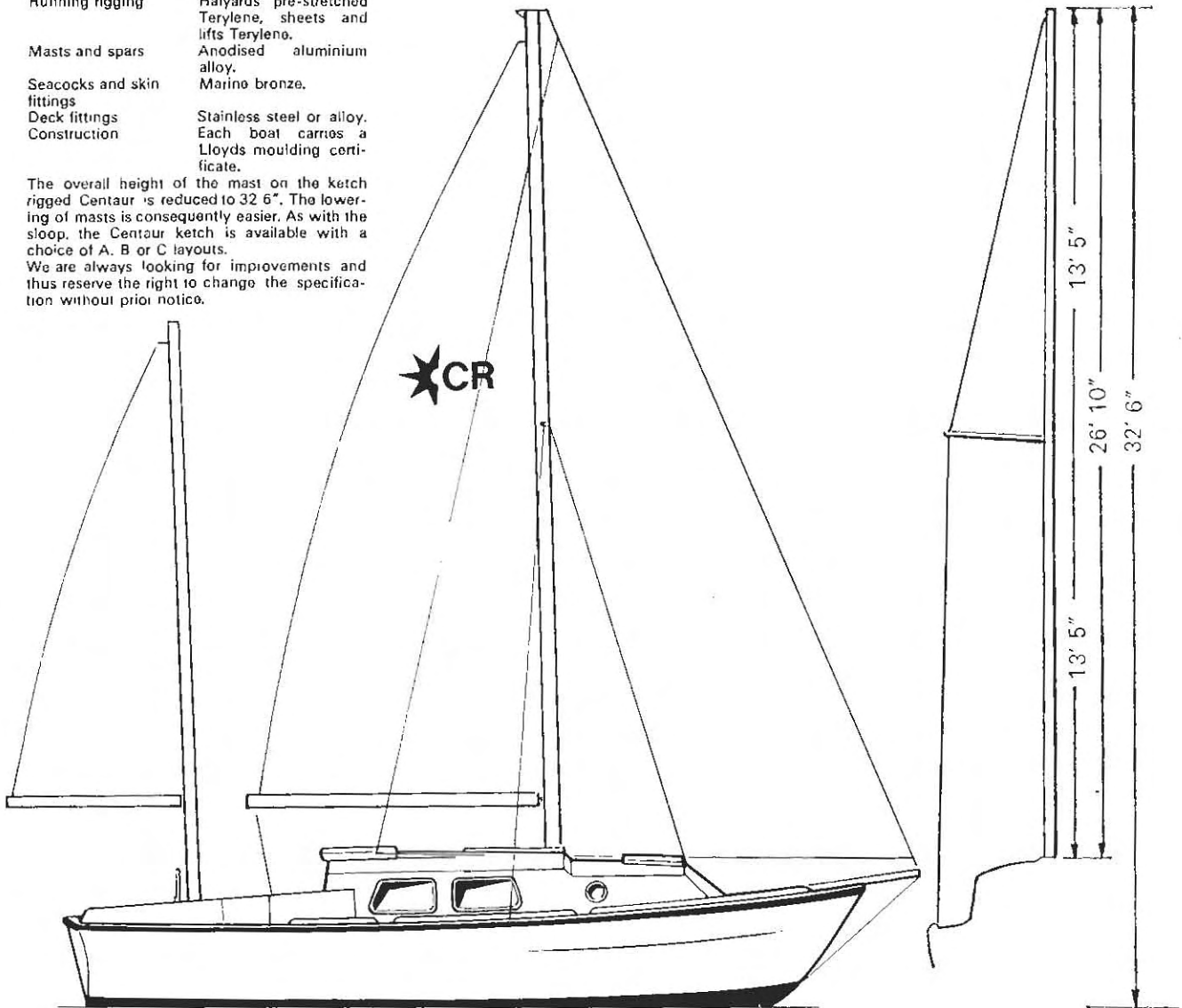
Sloop Rig

**SPECIFICATION
CENTAUR KETCH**

Length overall (inc. bowsprit)	27' 11"	8.5m
Length waterline	21' 4"	6.5m
Beam	8' 5"	2.6m
Draft	3'	0.9m
Displacement	6700 lbs	3039 kg
Ballast weight	2800 lbs	1270 kg
Thames Measurement	6.65 tons	
Mainsail	108 sq. ft.	10.20 sq. m.
Mizzen	37 sq. ft.	3.45 sq. m.
No. 1 jib	173 sq. ft.	16.10 sq. m.
No. 2 jib	110 sq. ft.	10.20 sq. m.
No. 3 jib	46 sq. ft.	4.25 sq. m.
Genoa	236 sq. ft.	22.00 sq. m.
Standing rigging	5/8" (5mm) diameter stainless steel 1 x 19, swaged ends (mizzen 4 mm).	
Mainmast	Anodised aluminium alloy.	
Running rigging	Halyards pre-stretched Terylene, sheets and lifts Terylene.	
Masts and spars	Anodised aluminium alloy.	
Seacocks and skin fittings	Marine bronze.	
Deck fittings	Stainless steel or alloy.	
Construction	Each boat carries a Lloyds moulding certificate.	

The overall height of the mast on the ketch rigged Centaur is reduced to 32' 6". The lowering of masts is consequently easier. As with the sloop, the Centaur ketch is available with a choice of A, B or C layouts.

We are always looking for improvements and thus reserve the right to change the specification without prior notice.



Ketch Rig



WESTERLY MARINE CONSTRUCTION LIMITED

Aysgarth Road . Waterlooville . Portsmouth PO7 7UF . England

Telephone: Waterlooville 54511.

Telex 86328

WESTERLY MARINE CONSTRUCTION LIMITED

Aysgarth Road, Waterlooville, Portsmouth PO7 7UF, Hampshire, England

Telephone: Waterlooville 54511

Telegrams: Westerly Portsmouth. Telex: 86328

Name _____	Sail No. _____
Address _____	Boat Name _____
_____	Delivery Date _____
_____	Delivery To _____
Day Telephone _____	
Date _____	

CENTAUR	Sloop £5500	Standard boat
	Ketch £6050	ex factory
		Excluding V.A.T.

STANDARD KETCH RIG INCLUDES:

Gold anodised mizzen mast and boom. Mizzen sail. Halyard and sheets for mizzen sail. Bowsprit. Wheel steering with emergency tiller.

In addition to:

STANDARD SLOOP RIG:

Sails and Rigging: Mainsail and No. 1 jib. Gold anodised mast and boom. Through mast reefing. Stainless steel standing rigging. Stainless steel rigging screws. Blocks. Terylene running rigging. Topping lift. Burgee halyard. Terylene jib and main sheets. Main halyard winch.

Deck Fittings: Stainless steel bow pulpit. Stainless steel single lifeline with stanchions. Gibb 577 bottom handle foresheet winches. Two sliding jib sheet leads. Bow roller and chain pipe. 15 lb. anchor. 15 fathoms 1/4" chain. Anchor pulpit stowage. Mainsheet sliding track. Cleats and fairleads. Stainless steel stay and shroud plates. Four teak handrails on cabin top. Lifting tiller. Running lights, steaming and stern lights.

Cabin Fittings: Two lights in main cabin, one in heads, one in forward cabin. Central fuse and switch panel. Complete set of berth cushions. Cabin sides lined in vinyl. Foam backed headliner in saloon and forward cabin. Saloon table. 15 gallon stainless steel water tank and pump. Sink and ice box. Marine W.C. Two burner Gaz cooker in gimbals with bottle. Curtain rails and runners in main cabin. Cabin ventilation grille. Opening ports in heads and hanging space. Fitted carpets. Wooden sliding locker fronts.

Engine: 25 h.p. Volvo Penta MD2B diesel, flexibly mounted, alternator, three bladed propeller, water cooled exhaust, instrument panel, battery and electrics. Reverse gear and electric start. 10 gallon fuel tank, remote controls and greasing system. Exhaust muffler. Ventilation from cockpit.

General: Choice of colours. Non-slip deck paint. Alloy framed windows. Teak rubbing strake. Antifouling. Bronze seacocks and skinfittings. Self-draining cockpit. Bilge pump. Lloyds certificate.

COLOURS: Please ring colour required:-

HULL	White	Wedgwood	Marine	Bronze	Charcoal	Yellow
		Blue	Blue	Green	Grey	
CABIN CUSHIONS	Vinyl -	Gold	Red	Blue		
	Fabric -	samples on request				
CARPET	Gold	Fawn	Orange	Blue	Green	Brown
ANTIFOULING	White	Red	Blue	Green		
PAINTED COVE LINE	White	Red	Blue	Green	Gold	
(Below rubbing strake)						
DECK PAINT	Light	Dark	Light	Dark	Light	
	Grey	Blue	Blue	Green	Green	

CABIN LAYOUTS: A. Six berths B. Five berths. C. Four berths.

FACTORY FITTED ADDITIONAL EQUIPMENT

	£
<u>Sails and Sailing Gear:</u>	
WM 3828 Sloop: No 2 jib (80 sq ft)	56
WM 3836 No 3 jib (45 sq ft)	45
WM 3846 No 1 Genoa (223 sq ft)	101
WM 3847 No 2 Genoa (182 sq ft)	84
Ketch: No 2 jib (110 sq ft)	66
No 3 jib (46 sq ft)	45
No 1 Genoa (236 sq ft)	108
Gold anodised bearing out spar	28
WM 3861 Spinnaker (Leech lengths 31'9")	105
Spinnaker gear including sheets and gold anodised boom	67
Mainsail cover - Sloop, Blue or White	17
Mainsail and Mizzen sail covers - Blue or White	25
WM 2649 Jib halyard winch - top action (Gibb 573)	16
WM 6130 Sestrel Minor Compass with light and lead to fuse panel	45
WM 6135 Seafarer echosounder on swinging bracket or flush mounted	45
WM 6139 Walker Knotmaster distance log	57
WM 6143 Sumlog, speed and distance indicator	59
<u>Deck Fittings:</u>	
WM 8387 Sprayhood - Blue or White	85
Teak washboards only for sprayhood	17
Double lifelines in lieu of standard single	15
WM 2004 Stainless steel stern pulpit	38
WM 8201 Four plastic fenders 17" x 4 1/2"	7
Name painting on stern. Mandatory for Registered boats	6
Name painting on stern in gold leaf	11
WM 8290 Two 30 ft berthing lines	7
<u>Cabin Fittings:</u>	
WM 2253 Ventilite 9" de luxe in forward cabin and/or saloon	11
WM 2252 Two opening ports fitted in forward cabin	25
WM 6154 Dry powder fire extinguisher	8
WM 3403 Two burner gas stove with grill in gimbals, gas bottle and reducing valve in lieu of standard	32
WM 7116/7 Double berth in main cabin for 'B' layout	25
WM 7105 Double berth conversion in forward cabin	15
<u>Alternative engine:</u>	
WM 3001 10 hp Volvo Penta MDLB diesel inboard	Credit £250
Non supply of MD2B	Credit £825
WM 3187 Optional second battery with changeover switch	30
<u>General:</u>	
Cathodic protection - zinc anode	13
Builders Certificate	5
Bill of Sale	5
D.T.I. Registration, includes Builders Certificate	55
Non-standard hull colour	26
Launching and commissioning at Gosport, including crane	35
Delivery in UK by quotation. Minimum charge	15
Customer responsible for hire of crane	

NOTES:

- 1) To reserve a delivery date, payment of £50 is required. This payment is made by you subject to contract. For boats purchased on a Marine Mortgage the Finance Company must be given written authority to pay this Company the amount loaned by the date required and before delivery.
- 2) Payment required - half total, less the initial £50, on signature of confirmation order. Balance ten days before delivery.

THIS PRICE LIST AND SPECIFICATION SUPERSEDES ALL PREVIOUS LISTS